

GB23STD

PRODUCT CLASS

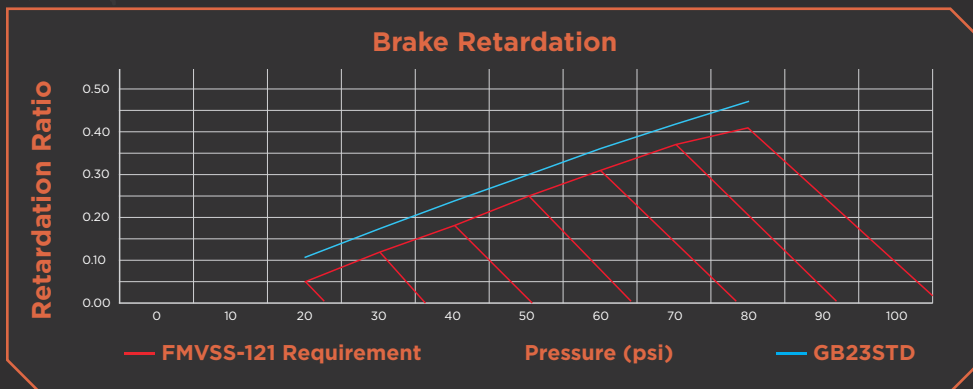
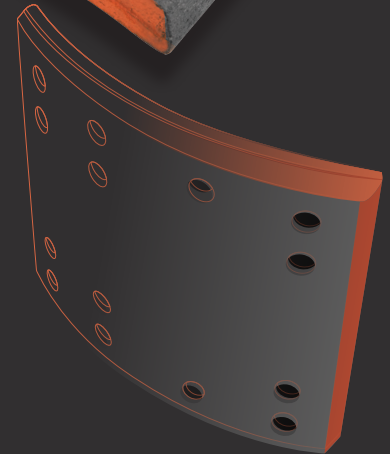
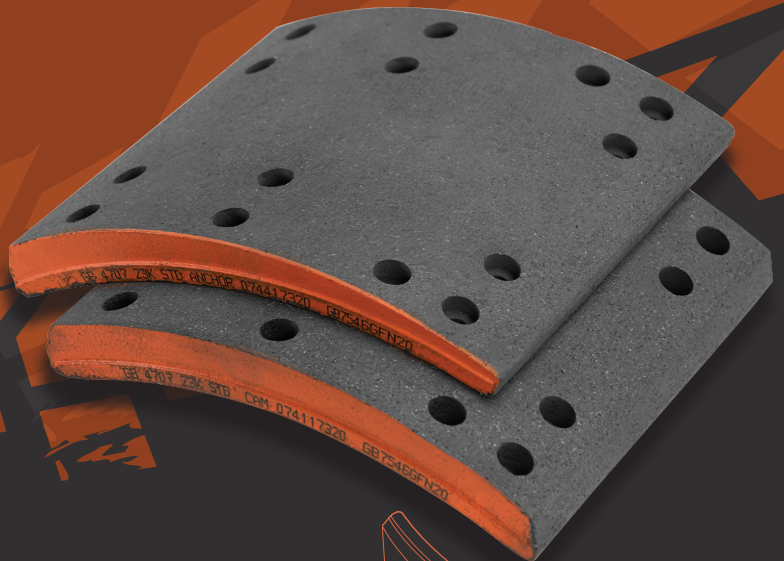
23K PREMIUM

AXLE RATING

UP TO 23,000 LBS

Truck • Tractor • Trailer • Multi-Duty • Line Haul

- Exceptional fade and recovery characteristics
- Copper free N rated formulation
- Long life and drum friendly



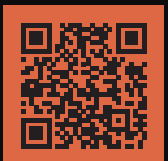
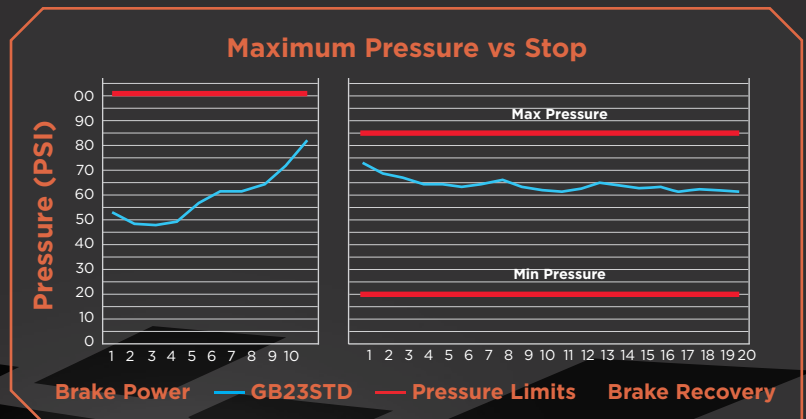
TEST PARAMETERS

BRAKE 16.5" X 7"

SLACK ADJUSTER 5.5"

SLR 19.6"

CHAMBER T30



Scan Here
with smart phone
to visit website
MAT-HD.com

Contact

Website: MAT-HD.com

Phone: 877.203.9495

Email: CS.MATHD@matholdingsinc.com



GORILLA
BY **MAT HD**

GB20STD

PRODUCT CLASS

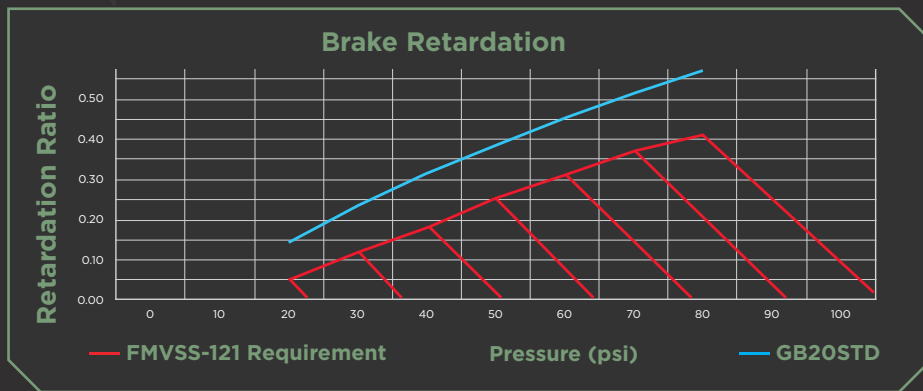
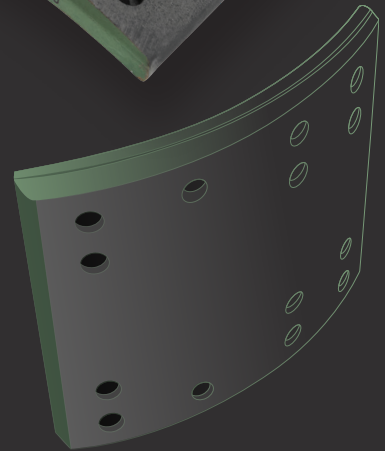
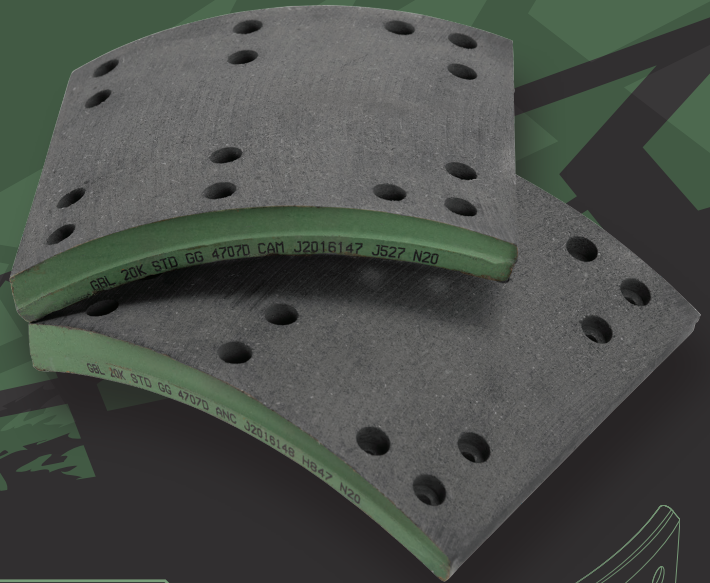
20K PREMIUM

AXLE RATING

UP TO 20,000 LBS

Truck • Tractor • Trailer • Multi-Duty • Line Haul

- Exceptional fade and recovery characteristics
- Copper free N rated formulation
- Long life and drum friendly



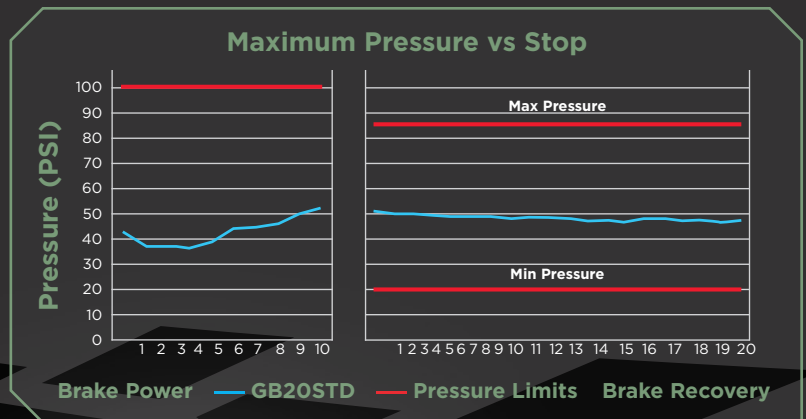
TEST PARAMETERS

BRAKE 16.5" X 7"

SLACK ADJUSTER 5.5"

SLR 19.6"

CHAMBER T30



Scan Here

with smart phone
to visit website

MAT-HD.com

Contact

Website: MAT-HD.com

Phone: 877.203.9495

Email: CS.MATHD@matholdingsinc.com



GORILLA
BY **MAT HD**